

Kailash Sacred Landscape Conservation Initiative (China, India and Nepal) Implementing Transboundary Biodiversity Conservation

Robert Zomer, Eklabya Sharma, Krishna Prasad
Oli and Bandana Shakya

Quito, Ecuador
July 2010

International Centre for Integrated Mountain Development
Kathmandu, Nepal

ICIMOD

FOR MOUNTAINS AND PEOPLE



Outline

- Kailash Sacred Landscape (KSL): Geography
- Rationale
- Conservation Approach
- Kailash Sacred Landscape Conservation Initiative (KSLCI)
- Long Term Vision



Kailash Sacred Landscape

The geographic stretch

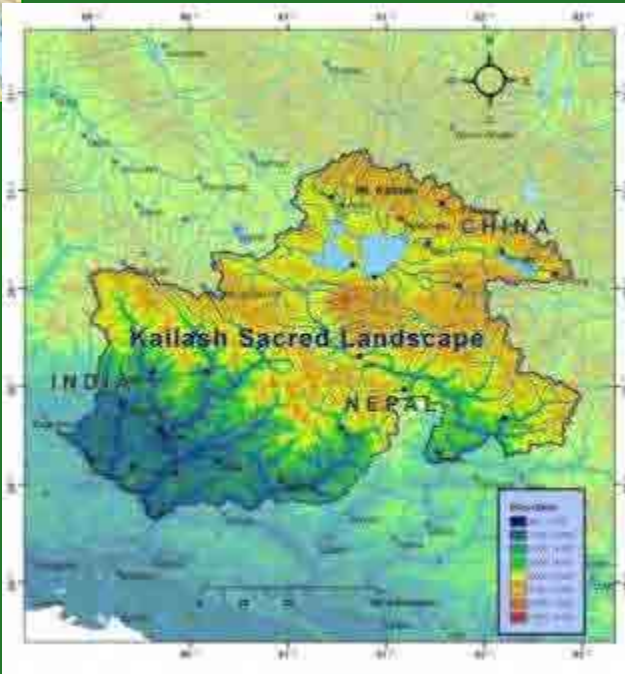
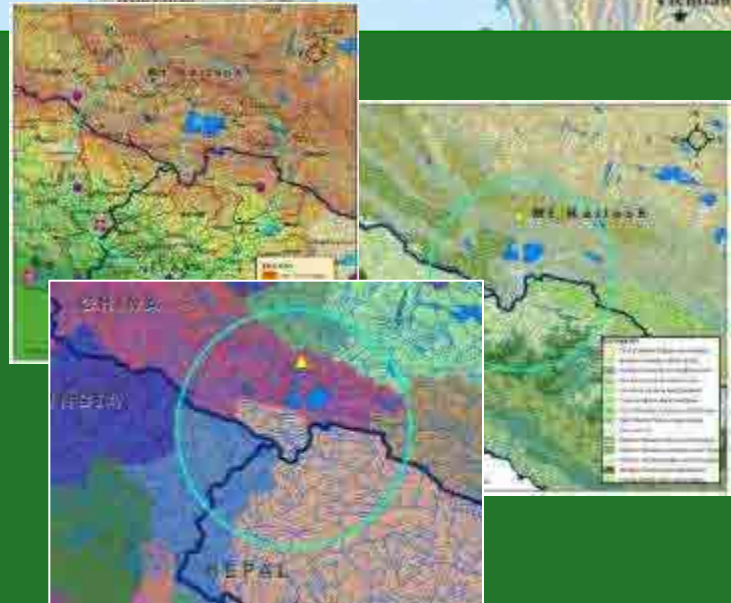
KSL region total area:
31,175 sq. km
KSL target area in RMCs
China: 10,843 sq.km
India: 7,120 sq.km
Nepal: 13,289 sq.km

National Project boundaries

delineation:

By each country based on baseline assessment and a national consultation process

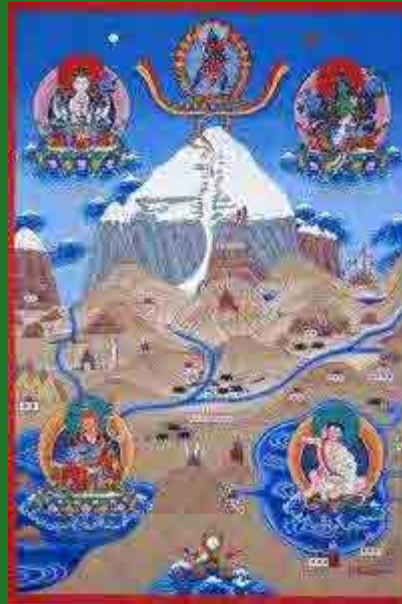
Criteria: Watershed boundaries;
Ecosystem Boundaries, Existing PAs; Conservation priorities,
Administrative Units;
Cultural Sites



Rationale

Transboundary cultural significance

- Important pilgrimage site (Tens of thousand of pilgrims journey to Mt. Kailash every year)
- Pilgrims primarily come from India, Nepal, Tibetan Plateau and other parts of China
- Ever increasing tourism and infrastructure development (Tibet expecting 3 million visitors by end of the decade)



Rationale

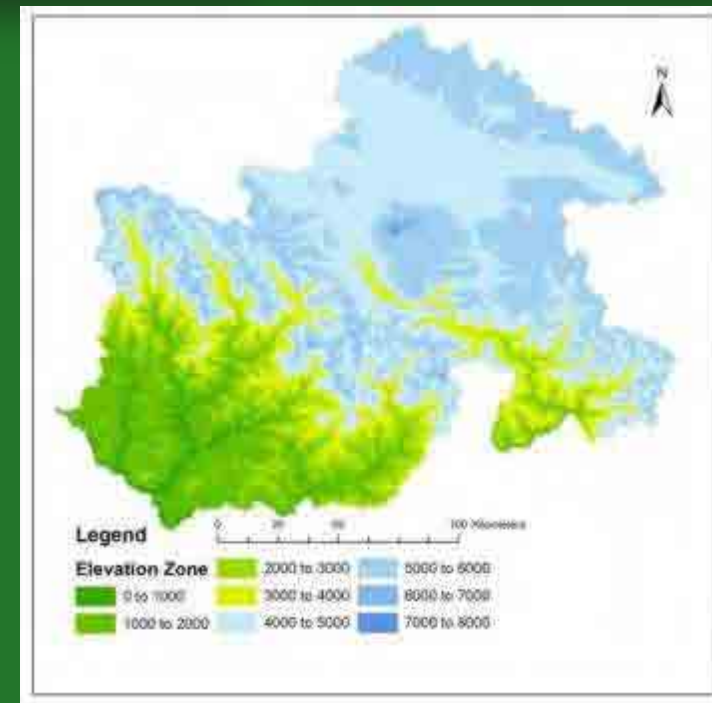
Transboundary ecosystem services

- Highly diverse array of endemic species, biomes, habitat for many rare and endangered species, medicinal plants, Important Bird Areas, Ramsar sites- lake Mansarovar,
- Source of four of Asia's great rivers (Indus, Brahmaputra, Karnali, Sutlej)



Tropical /Subtropical vegetation

About 5000 sq.km of area comprises of forests growing at the elevation of up-to 2000m (temperature remain around 21°C; subtropical pine forests, subtropical broadleaved forests, Tropical grasslands)



Rationale

Conservation & development challenges

- **Climate Change**

Accelerated warming evident in higher elevations; Melting glaciers and permafrost; drying wetlands; changes in hydrological and climatic regime, changes in seasonality, shifts in species range, cropping cycle, livestock range, pests and pathogen, invasive species



- **Over extraction of resources**

Medicinal plants; loss of genetic resources- agrobiodiversity

- **Tourism and Infrastructure**

expected to increase significantly- new roads, highways, Railways, Airports.



- **Poverty and limited livelihood opportunities**

Conservation Approach

- **Convention on Biological Diversity**
Mountain Biodiversity PoW
Ecosystem Approach
Transboundary Biodiversity Management
Role of cultural diversity, indigenous and traditional knowledge

All countries in HKH –signatory to the CBD

- **ICIMOD Conservation landscapes**
Seven Transboundary Landscapes identified
Everest (China –Nepal)
Kangchenjunga (Bhutan- India –Nepal)
Brahmaputra-Salween (China- India- Myanmar)
Kailash- (China-India-Nepal)



KSL Conservation Initiative Overview

ICIMOD

FOR MOUNTAINS AND PEOPLE

- Launched in August 2009
- Collaborative effort lead by ICIMOD, UNEP and regional Partners (China, India and Nepal)
- Promote transboundary biodiversity and cultural conservation, ecosystem management, sustainable development and climate change adaptation
- Regional Cooperation Framework



MoEF, India- Press Release

“a first of its kind trans-boundary project ... between countries in the region on science, culture and capacity building in the greater Himalayan region.”

KSLCI

Regional/International partners

ICIMOD

FOR MOUNTAINS AND PEOPLE

Strategic Implementation Partnership

- ICIMOD/UNEP

Lead Executing Institution

- ICIMOD

Regional Partners

- China, India, Nepal-
Respective Ministries and /or
Government agencies
- Universities and Research
Institutes
- Local NGOs and CBOs



Enhance cooperation among the Regional Member Countries

Facilitate coordination among the various actors and stakeholders

- Partners led stakeholder consultation
- Regional Cooperation Framework
- National and Regional Networks / Regional knowledge sharing platform



Regional Cooperation Framework (RCF)

- Policy enabling environment

Feasibility Assessment

- Delineation of target landscape; ecological and socio-economical assessment; policy and enabling environment assessment.

Conservation Strategy

- contribute towards CBD and MBPoW
- Conservation threats; management needs and approaches; policy intervention

Comprehensive Environmental Monitoring Plan

- Long-term ecological, climatic, and biodiversity monitoring framework; common ecological sampling and monitoring protocol (GCOS- UNEP, UNESCO, WMO, ICSU)

Basic Principles

- Participatory Management
- Equitability
- Sustainability
- Partnerships
- Ecosystem Management
- Lessons-learnt Approach
- Transboundary Cooperation



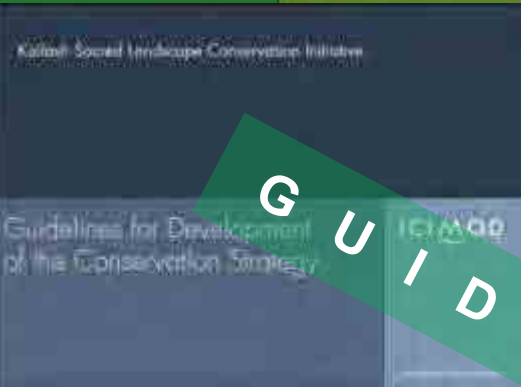
Constitutive Elements

- Transboundary biodiversity, environmental and cultural conservation
- Scientific and Technical Cooperation
- Information Exchange and sharing
- Regional guidelines, policy mechanisms and soft legal instruments



KSLCI

Guidelines and Information sharing



GUIDELINES

Long Term Vision

Phase I

- **Preparatory Phase (July 2009- January 2011)**
- Baseline assessment, Conservation strategy, CEMP, RCF

Phase II

- **Startup Phase (February 2011- July 2012)**
- Implementation frameworks, Capacity building, Community based conservation Initiatives, Awareness raising

Phase III

- **Implementation Phase I (August 2012- July 2017)**
- CBCI workplan, Implementation on all aspects of KSLCI based on RCF; CEMP

Phase IV

- **Implementation Phase II (August 2017- July 2023)**
- Mid term Review; sustainability, national ownership and phasing out of donor funded programme

Thank You

ICIMOD

FOR MOUNTAINS AND PEOPLE

International Tropical Timber
Organization (ITTO)

United Nations Environment
Programme (UNEP)

International Centre for Integrated
Mountain Development (ICIMOD)

For further information:

Dr. Krishna P. Oli, ICIMOD

koli@icimod.org

www.icimod.org/ksl

